

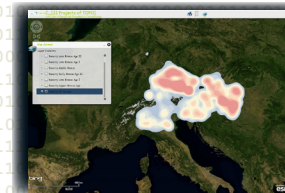
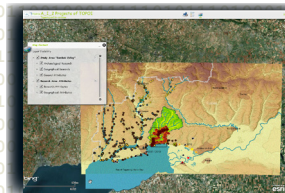
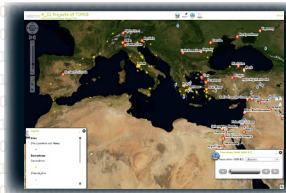
„SPATIAL DATA“

25. May 2015, 10 a.m. - 3 p.m. S.T.

Undine Lieberwirth Topoi

# Introduction to the Topoi-WebGIS

detailed program on page 2



**KONTAKT** undine.lieberwirth@topoi.org

**ORT** Topoihaus Dahlem GIS-Labor, Hittorfstraße 18, 14195 Berlin

The number of participants is limited. Therefore, please register by sending an email to the contact person until the 13th May 2015



A WebGIS is a digital, interactive platform, which can represent GIS data browser-based. In addition, this web service offers the ability to perform spatial analyzes and to make the data available for download.

- Participants will be able after the seminar to
- prepare and upload their GIS-data into the Topoi WebGIS,
  - manage and adjust the WebGIS-layout according to their data structure.

**Requirements:** Participants should be familiar with GIS in general and with ArcGIS in particular. It is recommended to bring along your own GIS-data. An information sheet, how to prepare the data for an WebGIS upload, will be send to all registered participants in advance.

### Program

**Theoretical Part:** introduction to the Topoi-WebGIS its potential, functionalities and integration into the Topoi concept (Undine Lieberwirth)

**Practical Part:** introduction to the Web-Server and the Application Builder (Alexander Städtler, Undine Lieberwirth)